

Madison Messenger



Mark Your Calendar

- August 22: Meet the Teacher Night 4:30-6:00
- August 23: First Day of School.
- Every Wednesday school is out at 1:10.
- Sept. 3: Labor Day, no school
- Sept 28: Boogie on the Blacktop at 5:30-7*
- Sept 28: Popcorn Day
- Oct 9: School Pictures

*Pending PTO Approval

A Note From Mr. Heaberlin

Madison Families,

As most of you are aware, all Des Moines Public Schools' elementary buildings will have new hours this year. However, I wanted to remind you that you may want to begin thinking of what your family's new morning and afternoon plans will be to make sure your kids are to school on time and safe after school.

Although many options are available, one that could be used is Metro Kids. Metro Kids is an afterschool program located at Cattell Elementary that runs from dismissal to 6:00 p.m. Students who attend this program ride the bus to Cattell elementary and take part in various after school activities. The cost of attending Metro Kids is listed on page 5 of this newsletter. Please note: Metro Kids no longer has a before school program.

Finally, please be sure that your child and his or her teacher know your family's plan for after school care. This way we can make sure all of our students stay safe.

Have a great rest of the summer!

Mr. Heaberlin

New Policy in DMPS I wanted you to be aware of a new policy with Des Moines Schools regarding morning drop off. The purpose of this policy is to keep your children safe. Parents who want to walk their child to class will need to check into the office prior to entering the building. This new policy will take effect on August 27. This will allow you to visit your child's classroom on the first couple of days of school, but starting Monday, Aug 27th it is recommended that kids walk to class on their own. The purpose of this policy is to ensure your kids are safe at all times. Thanks, Mr. Heaberlin

Des Moines Public School District Mission Statement

The Des Moines Public Schools exist so that graduates possess the knowledge, skills and abilities for success at the next stage of their lives.

Persons with disabilities who need information about accessibility to the building or who need sign or language interpreters, please contact Cory Heaberlin at 242-8420.

The Des Moines Public Schools prohibits discrimination based on age, race, creed, color, sex, marital status, national origin, religion, sexual orientation or disability in educational and employment programs and activities. The district prohibits acts of intolerance or any form of harassment toward employees or students. For information regarding procedures for discrimination complaints, contact the District Compliance Officer who is also the Title IX and 504 Coordinator, Des Moines Public Schools, 2323 Grand Ave, Des Moines, Iowa 50312, (515) 242-7781.



Meet the Teacher Night

Please join us on Wednesday evening, August 22nd, for Meet the Teacher Night. Stop by anytime between

4:30 and 6:00 PM.

This is a great time to help with those first day jitters and to drop off school supplies. We look forward to seeing you!

NEW SCHOOL HOURS

7:15 Doors open

7:15-7:30 Breakfast is served

7:30 Classes begin

2:25 Classes dismiss

Wednesday Dismissal—1:10

Parents of Kindergarteners

Kindergarten teachers will be meeting with kindergarten students before school starts to administer a few basic assessments and to teach students routines. This will allow the teacher a chance to get to know your child, both personally and academically, before the first day of school.

This will occur on Friday, August 10th. If you have not signed up for a time, please contact the school office at 242-8420 ASAP to schedule the appointment.

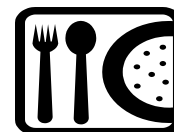


Lunch / Recess Schedule

Grade	Lunch	Recess
5	11:05	11:25
4	11:15	11:35
3	11:25	11:45
1	11:35	11:55
2	11:45	12:05
K	11:55	12:15

Food Service

If you have questions regarding the school lunch program or your child's lunch account please call the Food and Nutrition office at 242-7636.



Before School Reminder:

*We are continuing our Breakfast in the Classroom program. If you are new to Madison, this program provides every student a FREE breakfast as they walk into their classroom to start the day. **We will be opening school doors at 7:15 AM.** Therefore, you will need to plan accordingly because adult supervision will not be provided prior to this time. If you need before or after school childcare please call the Metro Kids office at 242-7951.*

Automated Telephone Messages

Madison school is able to send computer-generated phone calls to every student's home. Most of you are familiar with this from the past few years. In order to save paper and printing costs we will be using this process frequently for school reminders and emergencies. Please contact the school office if you are not receiving these calls. Also please keep us updated of any phone number changes.

Traffic Guidelines for Dismissal Time

- Hoffman Avenue and East 8th are for passenger loading and unloading. This means you may pull up to the curb **on the school side** to load or unload your children. **HOWEVER, YOU MAY NOT LEAVE YOUR CAR** or park for long periods of time.
- **The bus lane on Madison Avenue is for buses. This should help the car traffic to move more quickly on Hoffman and East 8th.** Stopping to load or unload children on Madison Avenue is illegal at all times. This is considered a major thoroughfare and loading and unloading is restricted.
- It is best to have your children meet you outside after school. The kindergarten teachers walk their children outside the west door facing East 8th and wait for parents on the blacktop area next to the building. Please contact me if you feel your child needs assistance getting outside the building and finding you.
- Always pull up to the curb on the school side of the street to load and unload your children. We will not allow children to go out into the street or cross the street to load into a car.
- We do our best to get people in and out of the loading spots quickly, but if one is not available you may need to circle around the block once.
- **You may not turn east on Hoffman Avenue in front of the school at drop off or dismissal time. It is only permissible to travel east to west during these time periods as noted by the sign.**
- There are signs on Hoffman near the intersection with East 8th and on East 8th near the intersection with Madison that indicate you may not park beyond those signs as you will block visibility at the intersection.
- Please be respectful of the Madison neighbors and do not park in, or block, their driveways.
- School dismisses at 2:25. Please do not come before 2:15 unless you are parking in the lot.
- Thank you for your cooperation and patience which will help us keep our children safe.



Appropriate attire

In an effort to provide a learning environment free from unnecessary distraction, all clothes should be worn in the way they were meant to be worn. All shirts should cover the midriff area. Undergarments should not be visible. No hats, including bandanas, may be worn inside the building. All logos and print should be appropriate for elementary children. If attire presents a distraction or disruption to the learning environment, the principal may meet with the child to solve the problem and may contact the parent. Please help your child in deciding on suitable clothing to wear to school. Thank you.

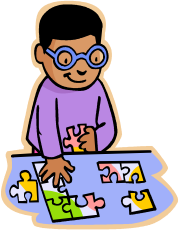


Metro Kids Child Care Available

Before and after school child care is available for Madison students at Cattell. The district provides transportation from Cattell in the morning and to Cattell in the afternoon. There is a \$32 registration fee. The weekly fees are listed below.

- Afternoon Care \$70
- Just early out Wednesdays \$28

In addition, full day regional day care is available during school breaks. Call 242-7971 for more information. Financial assistance through the Department of Human Services may be available to those who qualify. More info can be found at <http://madison.dmschools.org/> under the Parent tab.



Textbook Fees



Textbook fees are \$30 for grades K-5. Although Madison Elementary became a Community Eligibility Provision school a few years ago, meaning all students receive free lunch, some parents are required to pay textbook fees due to the information provided on the income survey during registration.

Please check your Infinite Campus account or contact us at 242-8420 to take care of this matter. Thank you.

School Pictures



School pictures will be taken on October 9. Please watch for a packet to come home. You must send money on this day if you wish to buy pictures. **Yearbooks will not be included in picture packets and will need to be purchased separately.**

PE SHOES



In order to be safe, all students need appropriate shoes for PE days. Please be certain to send your child to school in athletic shoes on gym days.

Bicycles



The elementary district handbook states the riding of bicycles to school should be reserved for students in grades 4 and 5. A consent note must be signed by the parent and provided to the school before a student rides a bike to school. Consent notes are available in the school office.

Human Growth and Development

As part of the curriculum in Des Moines Public Schools, students will participate in the study of human growth and development. More information regarding this content is available by contacting the school nurse. A student may be excused from this instruction with a written request from the parent or guardian to the school principal.

Sexual Harassment

As part of the curriculum at Madison Elementary School students will participate in learning about sexual harassment. A copy of the curriculum is available in the school office for review. A student may be excused from this instruction with a written request from the parent or guardian to the school principal.

Is your child responsible? Are you up to date on school events? The monthly newsletters are packed with important information. Please watch for them around the first of every month. If you do not get a copy, contact your child's teacher, the school office, or refer to the school website. If you have read this, I thank you very much for showing interest in your child's education and in school activities. If your child brings you the newsletters every month thank him/her for being a responsible child!

Madison Elementary

806 Hoffman Ave
Des Moines, Iowa 50316-1000
Phone: (515) 242-8420
Fax: (515) 323-8630

Cory Heaberlin, Principal
Kelly Ruden, Dean of Students

Bicycle Permission Form

The Parent/Student Handbook for Kindergarten-5th grade students attending Des Moines Public Schools addresses bicycle riding to and from school (page 3).

“The riding of bicycles to school is reserved by parents for students in grades 4 and 5. A consent note must be signed by the parent and provided to the school before a student rides their bike to school.”

“There shall be no riding of bicycles on the playground or school sidewalks during school hours. Bicycles are to be placed in the bicycle racks and locked until dismissal. The school is not responsible for lost, stolen, or damaged bicycles. We strongly encourage students to wear helmets if they ride bikes to school. The school is not responsible for the safety of students who choose to ride bicycles to and from school.”

My child and I understand that students who ride bicycles to and from school must abide by the following rules:

Bicycles must be parked in the designated area.

Bicycles must be locked while parked in the designated area.

Students should wear a helmet when riding a bicycle to and from school.

Students must walk their bicycles when they are on school property.

If the student chooses not to follow these rules, the student will not be allowed to continue riding a bicycle to school.

My child and I have read and discussed these rules. I give permission for my child to ride his/her bicycle to school.

Student Name: _____ Grade: _____

Student Signature: _____

Parent/Guardian Signature: _____

This signed form will be kept on file in the Madison Elementary School office.

SECURITY SYSTEM

Dear Parents,

I would like to thank you for your cooperation using our security system. To ensure that your child is safe at all times, we are asking that parents check in at the office whenever they visit the school. This would include morning drop off. If you plan on visiting the school during the day, you will need to register within our system.

The process takes between 5-10 minutes. You will need to provide your ID so your information can be matched with the information we have in our security system. We would like each parent that has not registered to start doing so with Mrs. Sheesley as soon as possible.

We need you to register in our security system for you to be able to enter the building even if you are just waiting for your child. We want to make you feel welcome but we also want to make sure the proper steps are taken to keep our staff and students safe.

If you have any other questions, please contact me at 242-8420. Thank you.

Best regards,

A handwritten signature in black ink that reads "Mr. Heaberlin". The signature is written in a cursive style with a large initial "M".

Cory Heaberlin, Principal

515-242-8420

cory.heaberlin@dmschools.org

THERAPIST

Dear Madison Parents,

My name is Janine Rounceville, and I am a School Based Mental Health Therapist with Orchard Place Child Guidance Center in Des Moines. I currently provide mental health services at Madison Elementary School for students who are not already involved in therapy services elsewhere. Please note that while I am based in the school, I am not employed by the school.

If your child is having difficulty functioning in the classroom and/or facing challenges at home, you may want to consult with me to see if therapy would be appropriate for your child.

Some common challenges facing students that may be helped by therapy are:

- Anxiety or excessive worry
- Frequently defying or refusing to comply with requests
- Excessive anger that the child has difficulty managing
- Significant changes that are difficult for the child, such as parent conflict, divorce, moving, or loss of a family member or close friend
- When the child is frequently sad and does not seem to enjoy activities
- When the child has experienced neglect, physical, emotional or sexual abuse, witnessed (heard or seen) domestic violence, or experienced any frightening or traumatic event

There is no cost to parents/guardians for this service because it is provided to the school by Orchard Place Child Guidance Center. Services are billed through the child's health insurance, and non-covered services are paid for through other funds. Parents will need to come in to meet with me to start services. Please know that this is first come, first serve, and I will accept new cases as I am able. You can be put on a waitlist as my caseload fills for the next open spot.

If you have concerns about your child, you may call Madison School at 515-242-8420 and speak with Sarah Majoros, guidance counselor, about service availability. Best wishes for a successful school year at Madison.

Sincerely,



Janine Rounceville, MSW, LMSW

School-Based Mental Health Therapist

Orchard Place Child Guidance Center

Madison Elementary

E-mail: jrounceville@orchardplace.org